

BS1930 SERIES BATTERY COMMANDER



OPTIONAL FEATURES



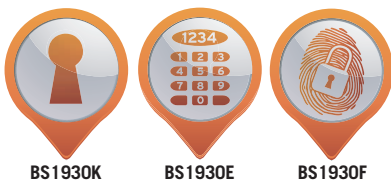
THE BATTERY COMMANDER SERIES has been designed for the protection of life and buildings from the devastating effects of Lithium battery Fires. They offer a safety storage and charging solution for large volume of Lithium-Ion batteries. Lithium-Ion batteries present many risks including thermal runaway caused by a rise in temperature, a shock or faulty manufacture. This can result in the battery igniting and causing a fire that can be extremely difficult to extinguish.

- **FIRE PROTECTION** – Tested to EN14470-1 (part 1) for 90 minutes.
- **DROP TEST** – Fire and impact tested from 9.1 metres for resistance to the impact of falling through the burning floors of a building.
- **VENTILATION** – Fitted as standard with air ventilation ducts, these ducts are heat protected by a thermal fuse that triggers at 75 Degrees C. This seals the unit in the event of an internal battery fire or external building fire. For added ventilation, an external extraction fan can be connected to the top exit vent duct, for forced extraction, this is highly recommended to prevent the build up of heat whilst charging.
- **INTERNAL TEMPERATURE MONITOR** – For safety the cabinet comes as standard with an external temperature display, this gives an accurate internal temperature reading and early warning of a potential issue with a battery over heating.
- **AUTOMATIC DOORS** – Each door is fitted with auto closing and auto locking function so the safe is always securely closed and sealed in the event of a fire.
- **LOCK OPTIONS** – **BS1930K** – Fitted with a high quality key lock supplied with two keys. **BS1930E** – Fitted with an advanced high security electronic lock with clear LED display, dual control, hidden code & scrambled code that can be programmed as standard. The lock can further be upgraded to incorporate multiple user audit trail so that user's usage can be monitored. **BS1930F** – Fitted with an advanced

- high security touchscreen keypad & fingerprint lock with clear LED display, internal alarm, dual control, hidden code and scrambled code that can be programmed as standard with up to 32 fingerprints.
- **MULTIPOINT LOCKING** – Fitted with an advanced multipoint locking system that securely seal the doors. Even in the event of the most severe battery explosion, the doors will remain securely closed.
- **CONSTRUCTION** – Double wall construction with internal fill of our patented Styronite F insulation provide a cabinet of great strength and fire/heat resistance.
- **CHARGING** – Safely charge your Lithium batteries using the fitted power points – 1 x surge protected 8 gang power block, option to add a further 3 power blocks to the pre-wired control boxes.
- **SHELVING** – Supplied with Heavy duty perforated height adjustable shelves capable of carrying 100kg at a time. Fitted with an internal base sump as standard.
- **EARTH LINK** – fitted and ready to connect to a suitable earth point.
- **WIRING** – Pre-wired for alarm and up to 4 x 8 gang power blocks.
- **PLINTH** – Fitted with a plinth to allow easy movability and removal from the building in the event of a fire situation. The plinth is supplied with a front cover to provide a neat exterior finish.
- **WARNING LABELS** – Fitted with warning labels to in accordance with ISO 3864 and ISO 7010, as well as the European directive 92/58/EEC.

MODEL NUMBER	EXTERNAL DIMENSIONS H x W x D	EXTERNAL CABLE BOX	EXTERNAL TRUNKING	INTERNAL DIMENSIONS H x W x D	DOOR SWING / HANDLE DEPTH	WEIGHT	CAPACITY	SHELVES/ DOORS
BS1931K/E/F	1245x690x650mm	ADDS 100mm	ADDS 25mm	980x510x440mm	650mm/40mm	300kg	220 Litres	2/1
BS1932K/E/F	1770x690x650mm	TO THE EXTERNAL	TO THE EXTERNAL	1505x510x440mm	470mm/40mm	400kg	338 Litres	3/1
BS1934K/E/F	1770x1125x650mm	DEPTH	HEIGHT	1505x945x440mm	560mm/40mm	590kg	626 Litres	3/2

All weights are for the product only and does not include the packaging.



Our cabinets are suitable for storing and recharging lithium-ion batteries

